



# POLYROC

— Prisma Tech Pvt Ltd —

Pioneer in Solid Surface Sheets manufacturing in Pakistan

NSF 51 - USA Certified

Prisma Tech





Prisma Tech

# TABLE OF CONTENTS

The concept of continuously innovating represents the very foundation of Prisma Tech, and through these efforts, we are working to build up on a track record of operational excellence and contribute widely to your dreams.



## About Company 01

Prisma Tech Private Limited (PTPL) was incorporated in Pakistan in 2017 and is highly honored to be serving as the first and the only manufacturer of Solid Surface Material in Pakistan till date with an annual capacity of 6,000 tons



02

## Certification

POLYROC solid surfaces are certified by NSF International as Food Safe product to be used in Kitchens, Restaurants, Food Courts, Hotels and Laboratories..

Prisma Tech Private Limited is the only NSF-51 certified Solid Surface Sheets manufacturer in Pakistan.

Kitchen

Countertops 03

Bathroom Vanities 04

Reception Desks 05

Labs & Hospitals 06

*Scan to download our catalogue*



Custom Colors 07

Our R&D is constantly innovating new design and colors to suit your needs





## Kitchen Countertops

---

Polyroc sheets are non-porous, stains cannot penetrate its surface. With proper cleaning, Polyroc sheets also resists the growth of mold, mildew and bacteria

# VANITIES

If You Can Imagine It,  
You Can Create It



*Bathroom  
Vanities*

As with any interior scheme, your designs for the bathroom represent an opportunity to realize your dreams and unique style. Polyroc sheets offers the inspirational variety, longevity, and elegance to embody your design ideas.

Whatever your vision for a bathroom project, basins, integrated vanities and other features made with Polyroc sheets are easy to include in your plans — the versatility they offer means custom solutions can be created in any size, shape, style or color. All Polyroc bathroom basins and vanities are simple to clean and can last as long as the life of the bathroom and beyond. Furthermore, the nonporous solid surface means that with proper cleaning, Polyroc sheets will not harbor the growth of mold or mildew.

# OFFICE FURNITURE / RECEPTION DESKS

## *Reception Desks*



The virtually seamless design possibilities of counters made with Polyroc sheets are bold, flexible, and dynamic. The color and texture options are endless. The surfaces stand up to the rigors of heavy use, while remaining stain-free and as good as new.

With Polyroc sheets, there's no limit on your design possibilities. Choose from an array of color, style, and display options, or create a customised solution for your unique design. Polyroc solid surface is versatile enough to meet all your needs.

## Conference Table

---



# *Labs and Hospitals*

Polyroc meets the high expectations of the most demanding healthcare design environments. With unlimited potential for surfaces in public spaces, operating room walls, scrub rooms, showers and baseboards, Polyroc is:

- Easy-to-clean and maintain.
- When properly cleaned, Polyroc is a hygienic surface and does not support the growth of mold and mildew.
- A nonporous surface with a smooth, seamless appearance.
- Extremely durable and long-lasting, standing up to hard knocks in high-traffic environments that can easily damage other surfaces, such as drywall and laminate.
- Easily renewed and repaired.
- Stain resistant
- Slip resistant
- Extensive color choice available, others on demand



## Custom Colors and Designs

We believe your creativity should never be limited for want of that perfect shade. Give us a color sample, a fabric strip, a paint chip, a logo or a color code – whatever you are trying to match – and we'll make a sample color plaque for your evaluation. Once you approve the lab sample and place your order, lead times range from eight to twelve weeks, depending upon the volume and complexity of the order, and the level of demand.



# SHADES & DESIGN

---

## Solid Colors

---



Ultra White



Mango



Naranja



Negro



Jasmine Green



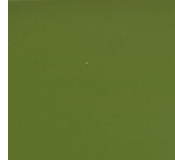
Pearl Grey



Rojo



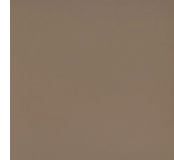
Concrete  
Grey



Forest Green



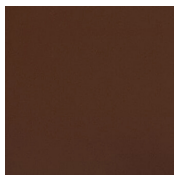
Pearl



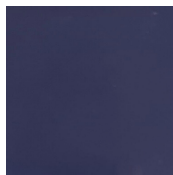
Caramel



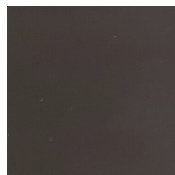
Walnut



Chocolate



Indigo



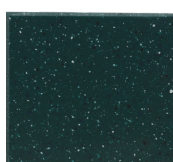
Cafe

## Econo Range

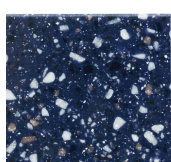
---



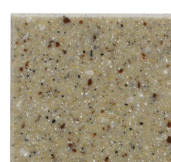
Aurora



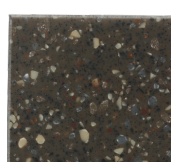
Aquamarine



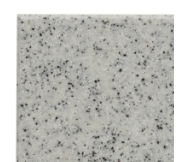
Blue Chip



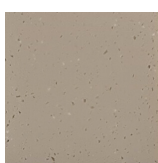
Beach



Cocoa Brown



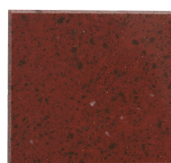
Dusk



Sandy



Mercury



Ruby



Sandstone



Snow White



Moon Stone

# SHADES & DESIGN

---

## Econo Range

---



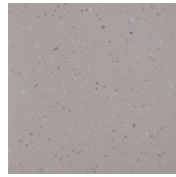
Pearly White



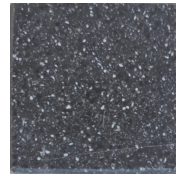
Grace



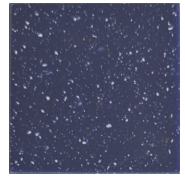
Smoke



Oak



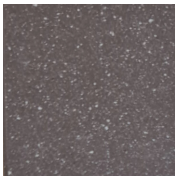
Star Night



Sapphire



Cosmos



Umber



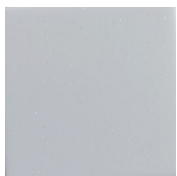
Midnight



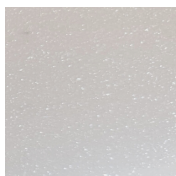
Universe

## Crystal Series

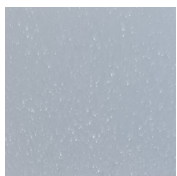
---



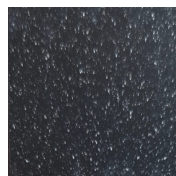
Crystal White



Ivory Crystal



Silver  
Metallized



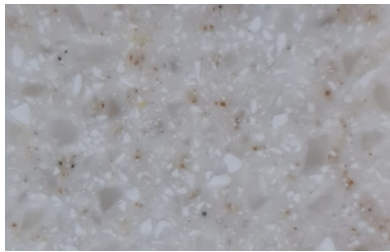
Crystal Black

# SHADES & DESIGN

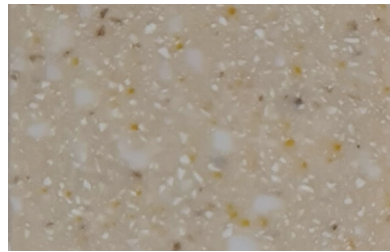
---

## Premium Series

---



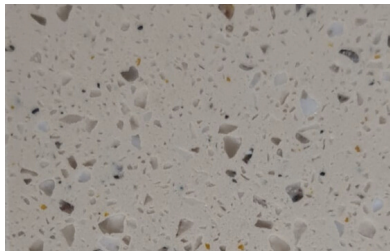
Sahara



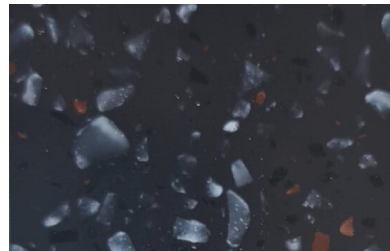
Seashore



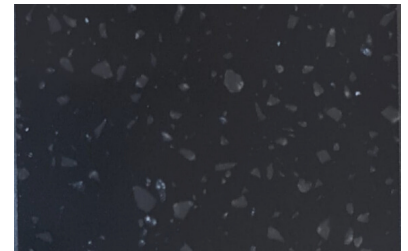
Bianco



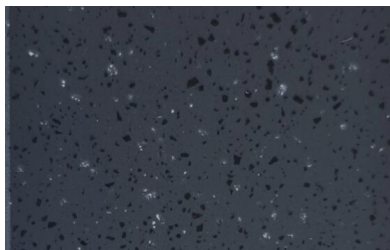
Fossil



Bonfire



Black Sea



Ash Grey

Prisma Tech Pvt Ltd

POLYROOC



**Head Office**

93 CCA, 2nd Floor, Block DD, Phase 4,  
DHA - Lahore  
0344-4457821 / 042-37196993

**Factory**

Plot No B-51, Phase 1-B, M3IC, FIEDMC, Near  
Sahianwala Interchange Faisalabad



[www.prismatech.com.pk](http://www.prismatech.com.pk)



[facebook.com/PrimaTechPrivateLtd](https://facebook.com/PrimaTechPrivateLtd)



+92-344-4457821